

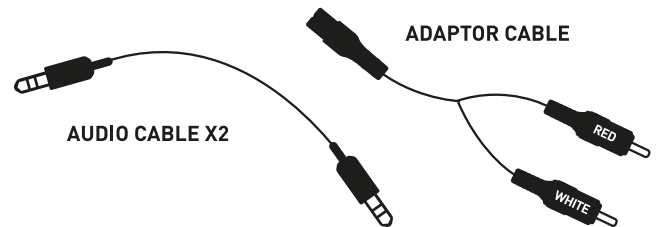


# WIRELESS HEADPHONES

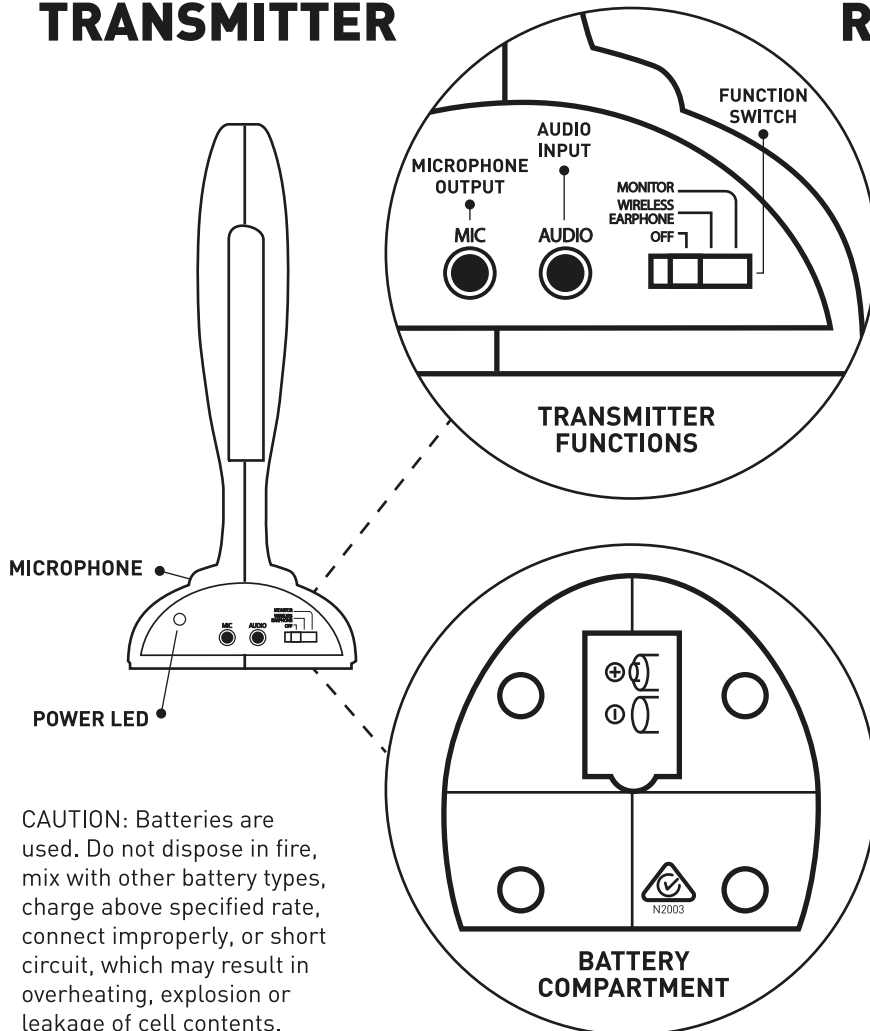
## WHAT'S INCLUDED

- 1 x Transmitter
- 1 x Receiver (headphones)
- 1 x 3.5mm to RCA adaptor cable
- 2 x 3.5mm audio cable

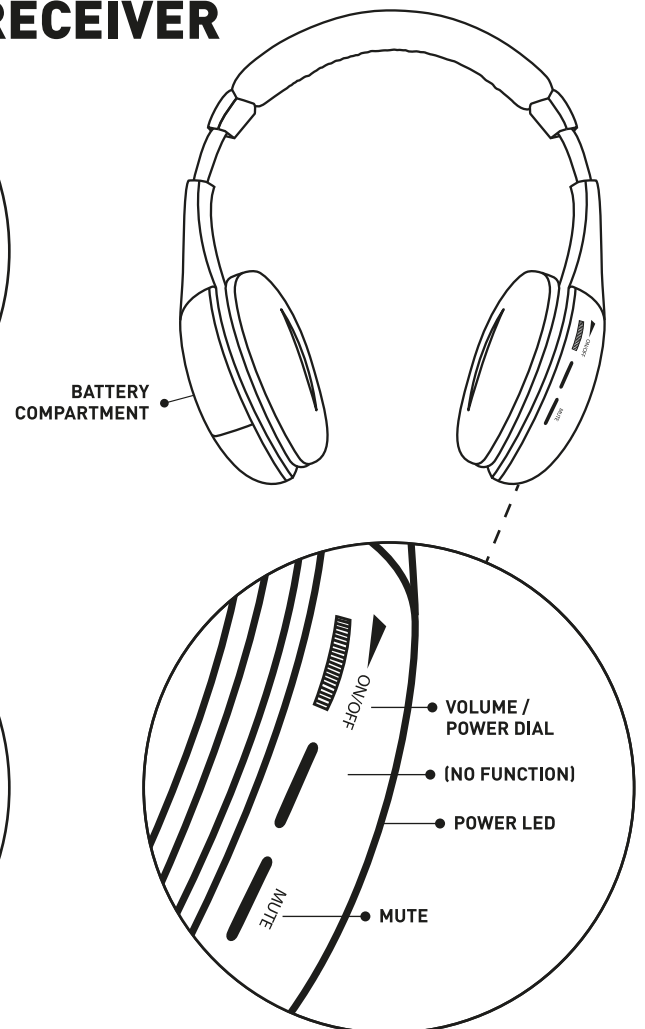
## CABLES



## TRANSMITTER



## RECEIVER



**CAUTION:** Batteries are used. Do not dispose in fire, mix with other battery types, charge above specified rate, connect improperly, or short circuit, which may result in overheating, explosion or leakage of cell contents.

# INSTALLATION

## INSTALLING THE RECEIVER (HEADPHONES)

1. Insert 2 x AAA batteries (not included) into the battery compartment according to the correct polarity.

## INSTALLING THE TRANSMITTER

1. Insert 2 x AAA batteries (not included) into the battery compartment according to the correct polarity.
2. Insert one end of the audio cable into the **AUDIO** socket on the back of the transmitter.
3. Insert other end of the audio cable into the **AUDIO-OUT** socket of your chosen audio source.  
In cases where the **AUDIO-OUT** socket of the audio source is not the headphone 3.5mm socket, use the supplied RCA adaptor cable for connection (see installation diagram to the right).
4. To achieve the best reception, spread out the transmitter audio cable which can also be used as an antenna.

## USING YOUR HEADPHONES WITH A TV **A B**

1. Insert the transmitter audio cable into the **AUDIO-OUT** socket of the source.  
If a TV is used as the source, the TV can be muted to only output sound through the headphones.
2. Move the FUNCTION SWITCH to the **WIRELESS EARPHONE** position to turn on the Power LED of the transmitter.
3. Turn the **VOLUME / POWER DIAL** on the headphones to turn on the Power LED of the headphones.
4. The headset will automatically search for TV channel.

## USING YOUR HEADPHONES WITH AN AMPLIFIER **C**

1. Insert the transmitter audio cable into the **AUDIO-OUT** socket of the amplifier. Ensure the amplifier is switched **ON** and is generating an audio signal.
2. Move the FUNCTION SWITCH to the **WIRELESS EARPHONE** position to turn on the Power LED of the transmitter.
3. Turn the **VOLUME / POWER DIAL** on the headphones to turn on the Power LED of the headphones.
4. The headset will automatically search for amplifier channel.

## USING YOUR HEADPHONES FOR WIRELESS INTERNET CHAT / GAMING **D**

1. Connect one audio cable to the **AUDIO** socket of the transmitter and insert the other end of the cable into the **AUDIO-OUT** socket of the computer.
2. With the other audio cable, insert one end into the **MIC** socket of the transmitter and insert the other end into the **MICROPHONE INPUT** of the computer.
3. Aim the microphone socket (**MIC**) of the transmitter towards you then move the **FUNCTION SWITCH** to the **WIRELESS EARPHONE** position. The Power LED of transmitter will turn on.
4. Turn on the **VOLUME / POWER DIAL** of the headphones and the Power LED of the receiver will turn on.
5. The headset will automatically search for computer channel.

## USING YOUR UNIT AS A SOUND MONITORING DEVICE

1. Place the transmitter near the area you want monitored and aim the microphone **MIC** towards it.
2. Move the **FUNCTION SWITCH** of the transmitter to the **MONITOR** position and the Power LED will come on.
3. Turn on the **VOLUME / POWER DIAL** and the Power LED of the receiver will come on.
4. Press the **RESET** button, then the **SCAN** button until the channel of your source is heard.

## USING YOUR HEADPHONES WITH A CABLE (NOT WIRELESS)

1. Turn the **VOLUME / POWER DIAL** to **OFF** on the headphones.
2. Insert one end of the audio cable into the audio socket at the bottom of the headphones.
3. Insert the other end of the cable into the headphone socket of your audio source.
4. Your headphones are ready for use.

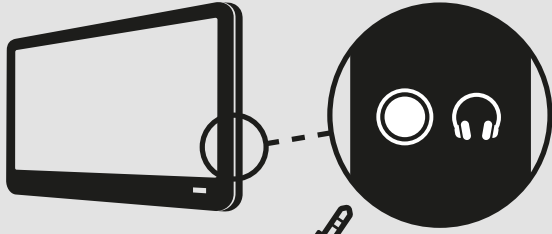
## SAVING BATTERY POWER – SWITCHING OFF YOUR UNIT

Save battery power by turning off your unit when not in use:

1. Move the **FUNCTION SWITCH** on the transmitter to the **OFF** position.
2. Turn the **VOLUME / POWER DIAL** on the headphones to the **OFF** position.
3. The Power LEDs on the transmitter and headphones will turn off. Remove batteries when not in use for long periods.

# INSTALLING THE TRANSMITTER

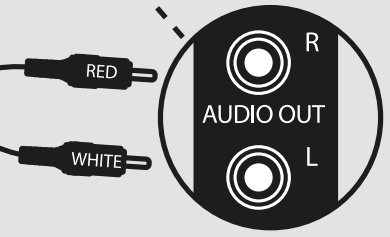
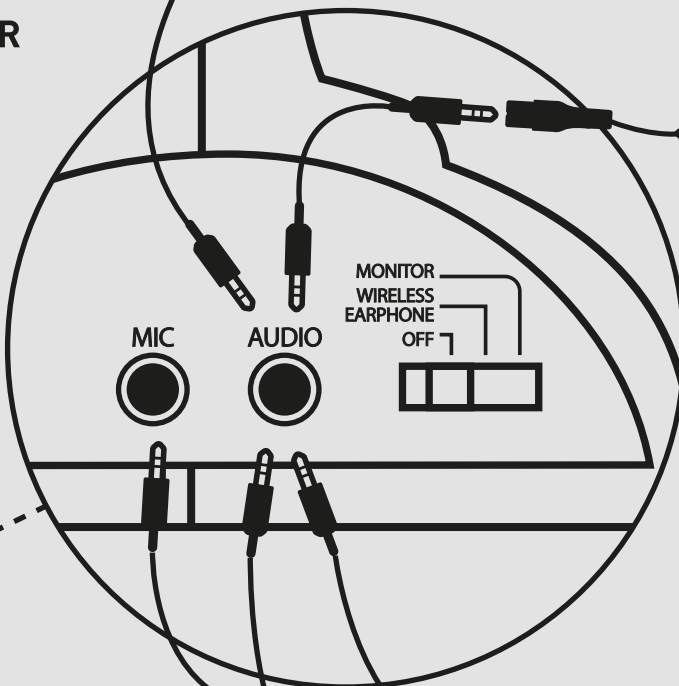
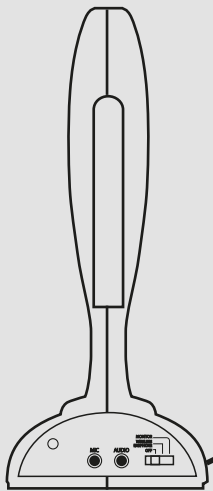
## A CONNECTING VIA TV SIDE PANEL (using the audio cable)



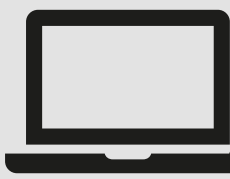
## B CONNECTING VIA TV REAR PANEL (AUDIO OUT using the RCA adaptor cable)



TRANSMITTER



## D CONNECTING VIA COMPUTER/ LAPTOP (using the audio cable)



HEADPHONE  
ADAPTOR  
(NOT INCLUDED)

## C CONNECTING VIA AMPLIFIER AV RECEIVER (using the audio cable)



# PLEASE NOTE

If your audio device does not have a 3.5mm or RCA audio output option, then you may need a digital-to-analogue converter to maximise your enjoyment from your Liquid Ears Wireless Headphones.

Did you know you can buy the item direct from The Crest Company using a credit card and have it delivered direct to your door?

Contact our helpful Customer Support team on

**1800 812 261**

who can recommend the right product for your needs from The Crest Company range and arrange your purchase direct.



Proudly brought to you by:



PO Box 5658 Brendale  
QLD Australia 4500  
Customer Support  
**1800 812 261**  
[www.crest.com.au](http://www.crest.com.au)

**HW8900BK**