

# Tilt/Swivel TV Mount Installation Guide



## SPECIFICATIONS

- Display Size: 10" to 27"
- Maximum Load: 44 lbs (20 kg)
- Mounting Pattern: VESA 75 or VESA 100
- Tilt Range: +/- 13.8°
- Pan/Swivel Range: 70°
- Horizontal Rotation: 360°
- Extension/Profile: 9.5 cm (3.7")

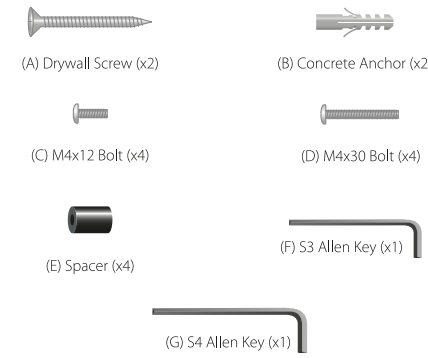
## BOX CONTENTS

- Tilt Wall Mount (x1)
- Wall Plate (x1)
- Instruction Guide (x1)
- Hardware Kit (x1)

## IMPORTANT

- 1 Ensure this Installation Guide is completely read and understood before attempting installation.
- 2 Crest TV mounts MUST NOT be installed solely in plasterboard, fibre cement and similar surfaces.
- 3 Crest TV mounts MUST be installed in sound supporting structures such as those made of timber, steel or masonry using appropriate fasteners.
- 4 The supporting structure must be capable of sustaining the combined weight of the TV mount and the display otherwise the structure must be reinforced.
- 5 The fasteners supplied in this hardware pack allow for fixing into timber and masonry only. If installing into a supporting structure made of steel, appropriate fasteners must be used and sourced from an appropriate supplier.
- 6 Use appropriate tools and safety equipment and ensure adequate ventilation during installation.
- 7 If uncertain about any aspect of installation, contact Crest or an installation professional.

## HARDWARE KIT



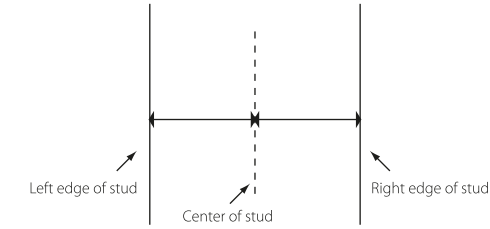
## TOOLS REQUIRED

- Stud finder
- Phillips Head Screw Driver
- Drill with hammer function (if installing in masonry)
- 1/8" (3 mm) Drill Bit and Stud Finder for Drywall Installation
- 5/16" (8 mm) Masonry Bit for Masonry Installation
- Small spirit level
- Hammer

## INSTALLATION

### Part 1A – Installing the Wall Plate (Drywall)

- 1 Use a stud finder to locate a stud for installing the wall plate. Use a nail or awl to verify the location of the stud.
- 2 Place the wall plate over the center of the marked stud and level it using a small spirit level.



### Part 1A – Installing the Wall Plate (Drywall) (continued)

- 3 Mark off the two holes for securing the wall plate.
- 4 Drill the marked holes using a 3mm (1/8") drill bit.
- 5 Attach the wall plate using the Drywall Screws (A). Make sure both screws are snug, but do not over-tighten them.

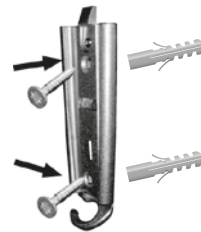


### Part 1B – Installing the Wall Plate (Masonry)

- 1 Place the wall plate in the desired location and level it using a small spirit level.
- 2 Mark off the two holes for securing the plate.
- 3 Drill the marked holes using an 8mm (5/16") masonry drill bit and remove any excess dust from holes.
- 4 Insert a Concrete Anchor (B) into each hole. The anchors must be inserted until they are flush with the concrete surface; a hammer can be used to lightly tap each anchor into place if necessary.

### Part 1B – Installing the Wall Plate (Masonry) (continued)

- 5 Attach wall plate by inserting the Drywall Screws (A) into the concrete anchors (B). Make sure both screws are snug, but do not to over-tighten them.



### Part 2 – Attaching the Mount to the Display

- 1 Determine the correct bolt to use by examining the back of your display:
  - A If the back of your display is flat and the mounting holes are flush with the surface, use one the M4x12 Bolts (C) from the hardware kit.
  - B If the back of your display is curved, has a protrusion, or if the mounting holes are recessed, use one the M4x30 Bolts (D) and the Spacers (E).
- 2 Attach the mount to the back of your display using the hardware identified in Step 1. Make sure all screws are secure, but do not over-tighten.

**NOTE:** If the holes of the mount do not line up with the holes on your display, check to make sure that your display is VESA compatible. This mount can only be used with displays that are VESA 75 or VESA 100 compatible.

### Part 3 – Final Assembly

- 1 To complete the installation, simply slide the mount with your display attached into the wall plate. The plastic tab at the top of the wall plate will click to indicate that the mount is secure.
- 2 To remove the mount from the wall, push in on the plastic tab and carefully slide the mount upwards and out of the wall plate.
- 3 For extra security and stability, tighten the set screw located on the wall plate (see illustration) using the S3 Allen Key (F) provided with the hardware kit. Remember to loosen the set screw before attempting to remove the mount from the wall.



### Part 3 – Final Assembly (continued)

- 4 To use the integrated cable management feature, route the cables through the hook located at the bottom of the wall plate (see illustration).



- 2 Swivel adjustments can be made simply by moving your display into the desired position. If the swivel joint is too tight or becomes too loose, it can be adjusted using the S4 Allen Key (G) provided in your hardware kit (see illustration).



## OPERATION AND ADJUSTMENT

- 1 To adjust the tilt angle or rotate your display, firmly grasp the sides of your display and carefully move it into position. If you find the mount is too difficult to move or is too loose to hold your mount in position, adjust the three screws located directly behind the head of the mount using the S4 Allen Key (G) from the hardware kit (see illustration). Make sure you adjust all three screws evenly.